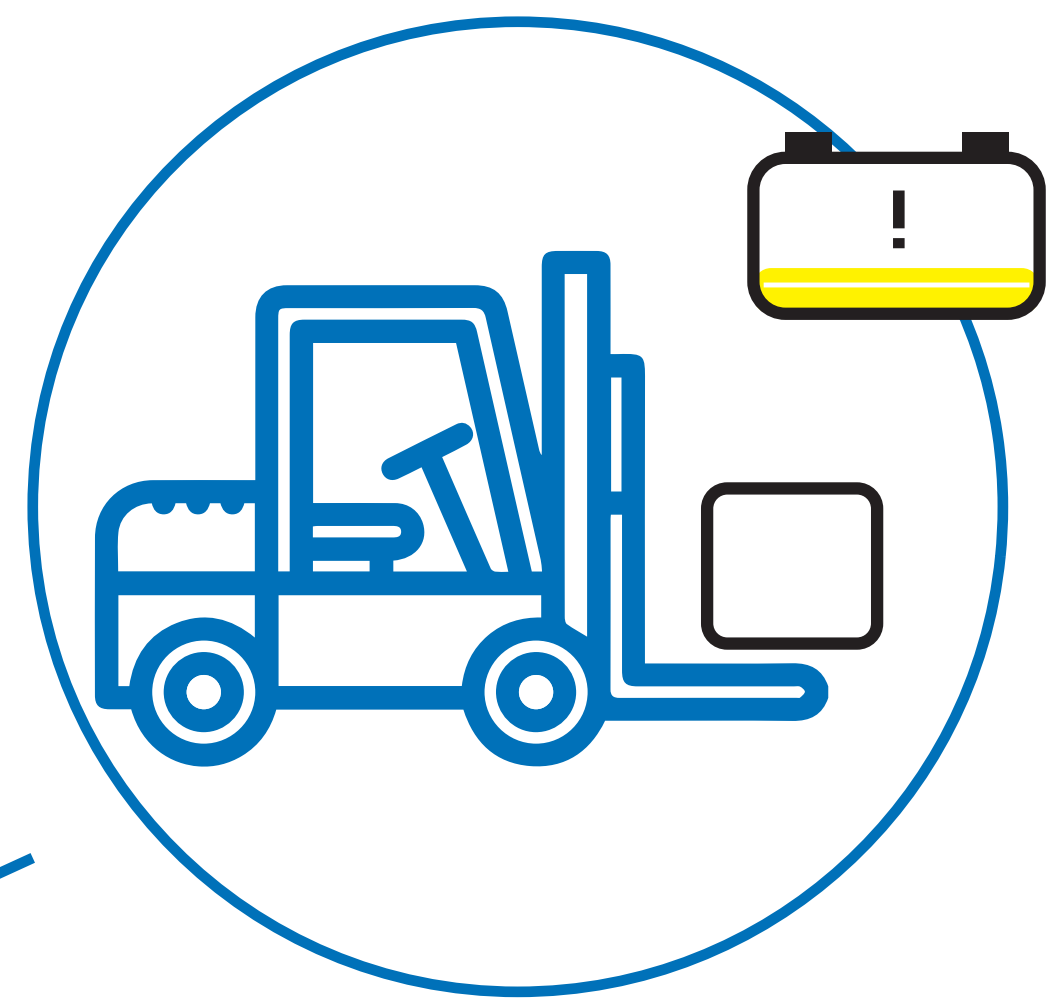


How Over-Discharging Increases Downtime

1 Start with Full Battery



2 Low Battery Indicator Turns On



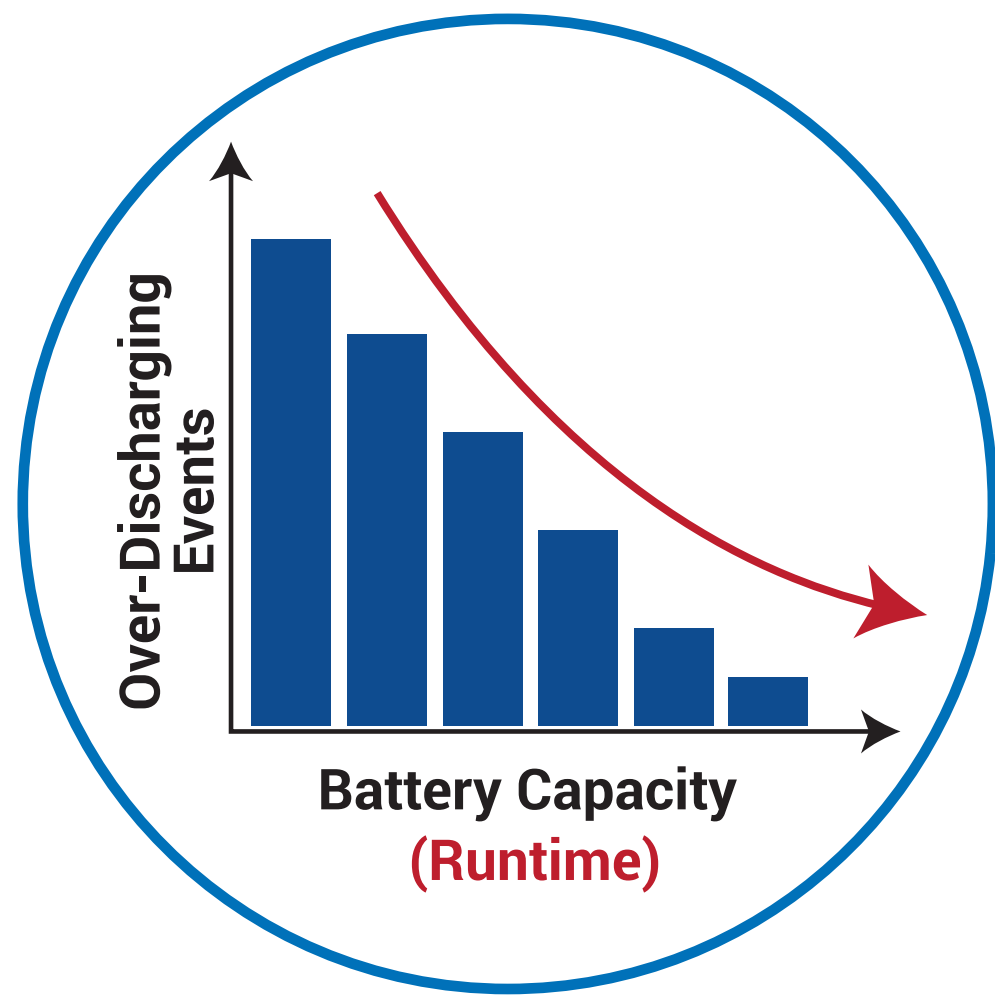
3 Continued Use at This Point Will Result in Over-Discharging



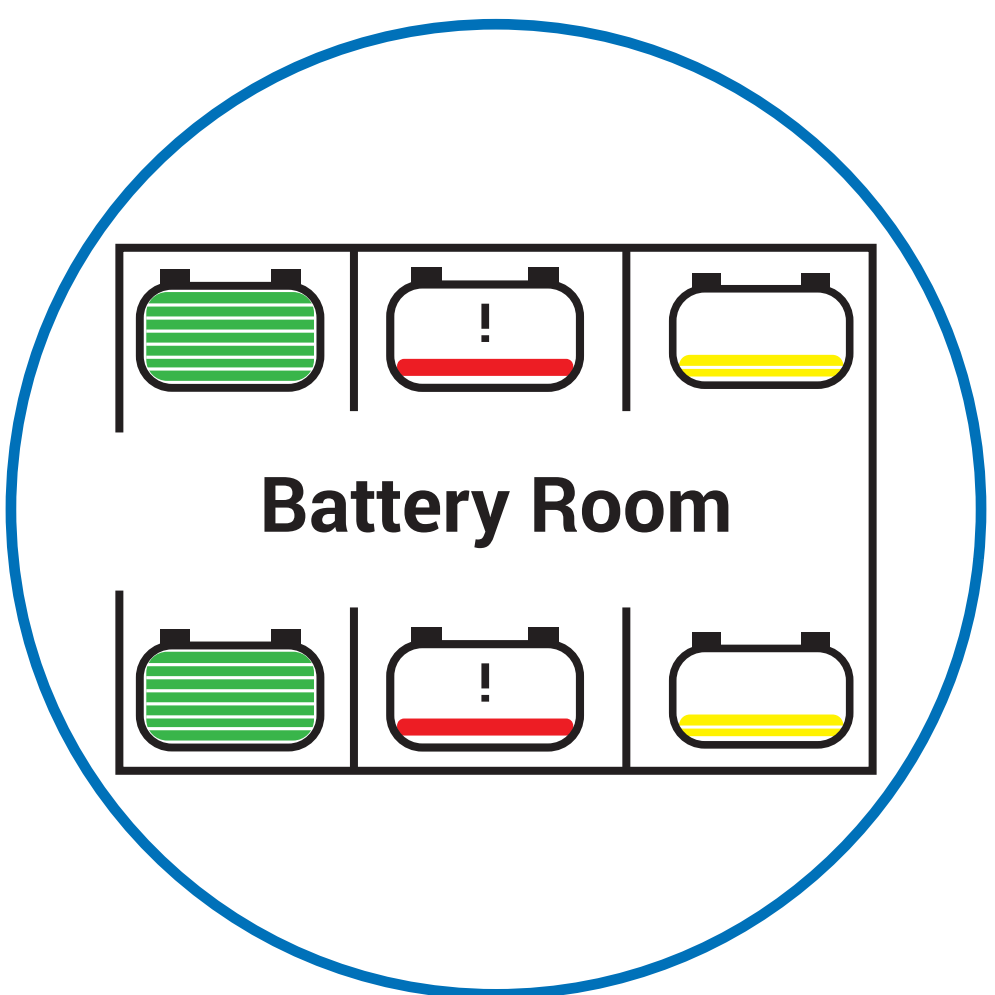
4 Over-Discharging Permanently Damages the Battery and Prevents a Full Recharge



5 Batteries That Cannot Fully Recharge Greatly Decrease Runtime



6 Changeovers and Operator Downtime Increase as a Result



Tips for Sustaining Battery Runtime

1. Promptly change the battery when prompted by low battery indicator
2. Never disconnect and reconnect cables to extend runtime
3. Charge battery at the end of each shift when battery indicator is not full
4. Ensure fork truck and all accessories are turned off when not being used.